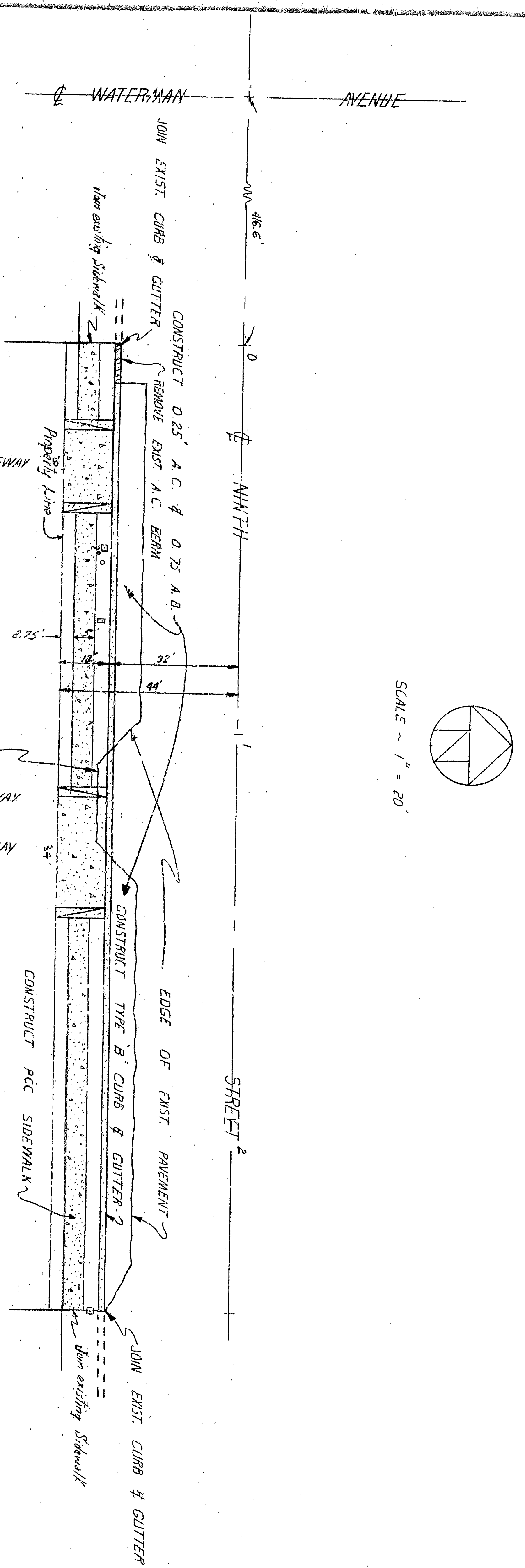


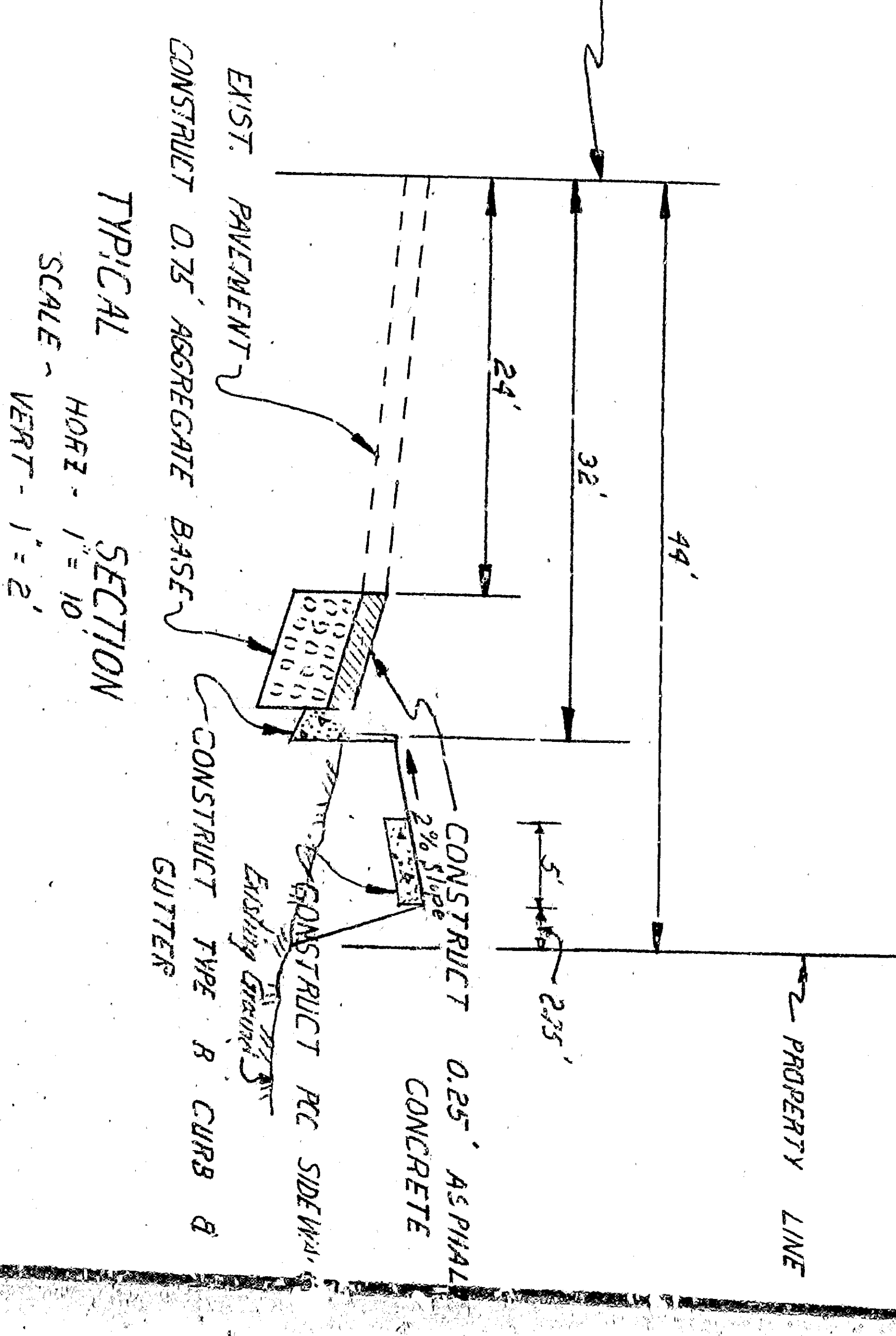
NOTES:

All work indicated on these plans shall be done in conformity with applicable provisions of Standard Specifications No. 2321 and Standard Drawings No. 2321.

BENCHMARK
ELEVATION: 1065.47, N. 3 1/2'
CITY BENCHMARK NO. 4, NORTHWEST CORNER OF NINTH STREET & WATERMAN AVENUE

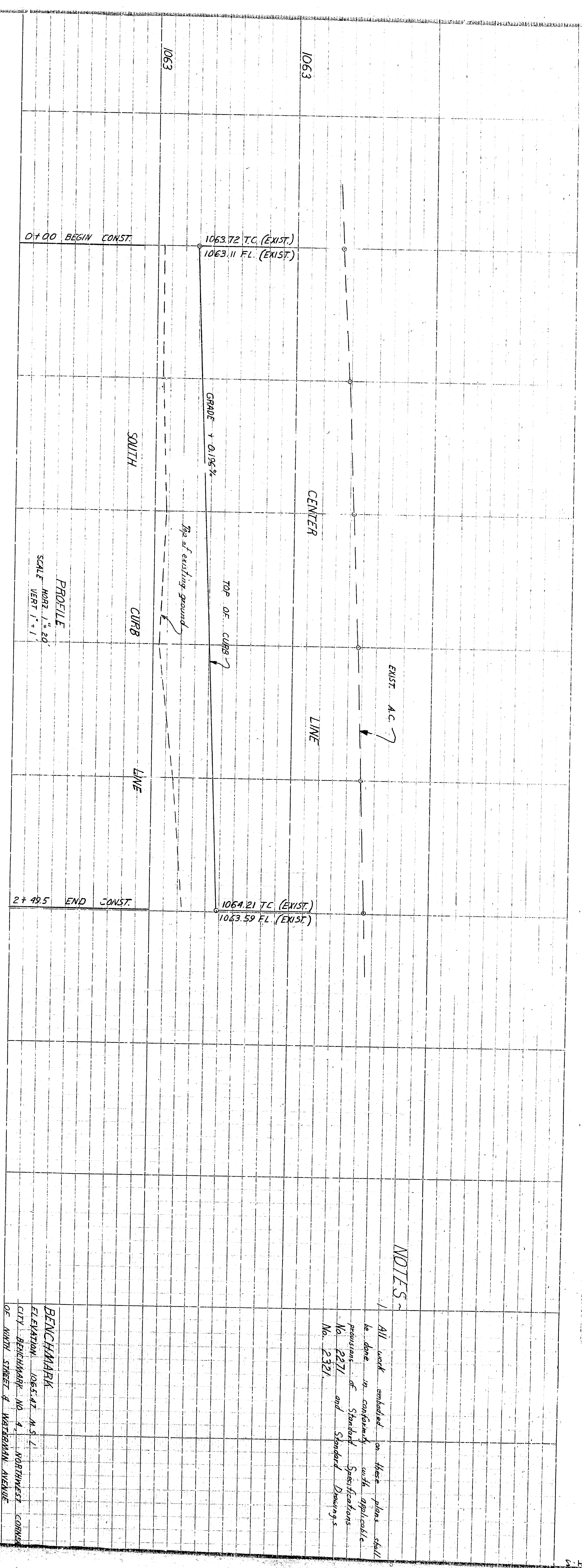


SCALE ~ 1" = 20'



TYPICAL SECTION
SCALE: HORIZ. 1" = 10', VERT. 1" = 2'

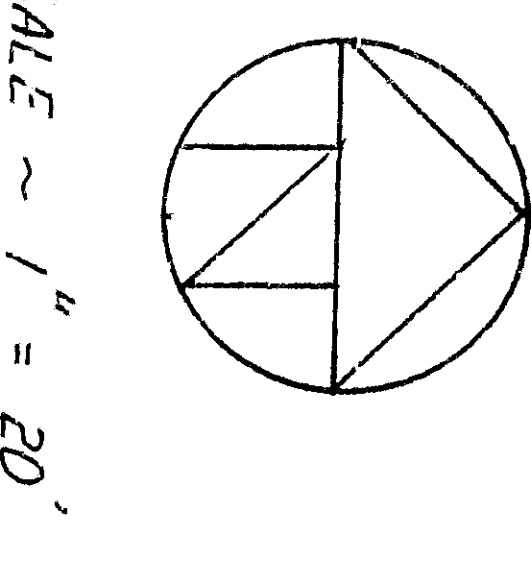
| | | |
|--------------------------------------|--------|-------------------------------|
| APPROVED | 1983 | DEPARTMENT OF ENGINEERING |
| <i>[Signature]</i> | | CITY OF SAN BERNARDINO |
| REGISTERED CIVIL ENGINEER NO. 18,623 | | IMPROVEMENT |
| DRAWING NO. 1 | DATE | PLAN |
| 3292 | 1/8/83 | NINTH STREET |
| CHECKED BY <i>[Signature]</i> | | 48.6' EAST OF WATERMAN AVENUE |
| 1 SHEETS OF RECOMMENDATION | | |



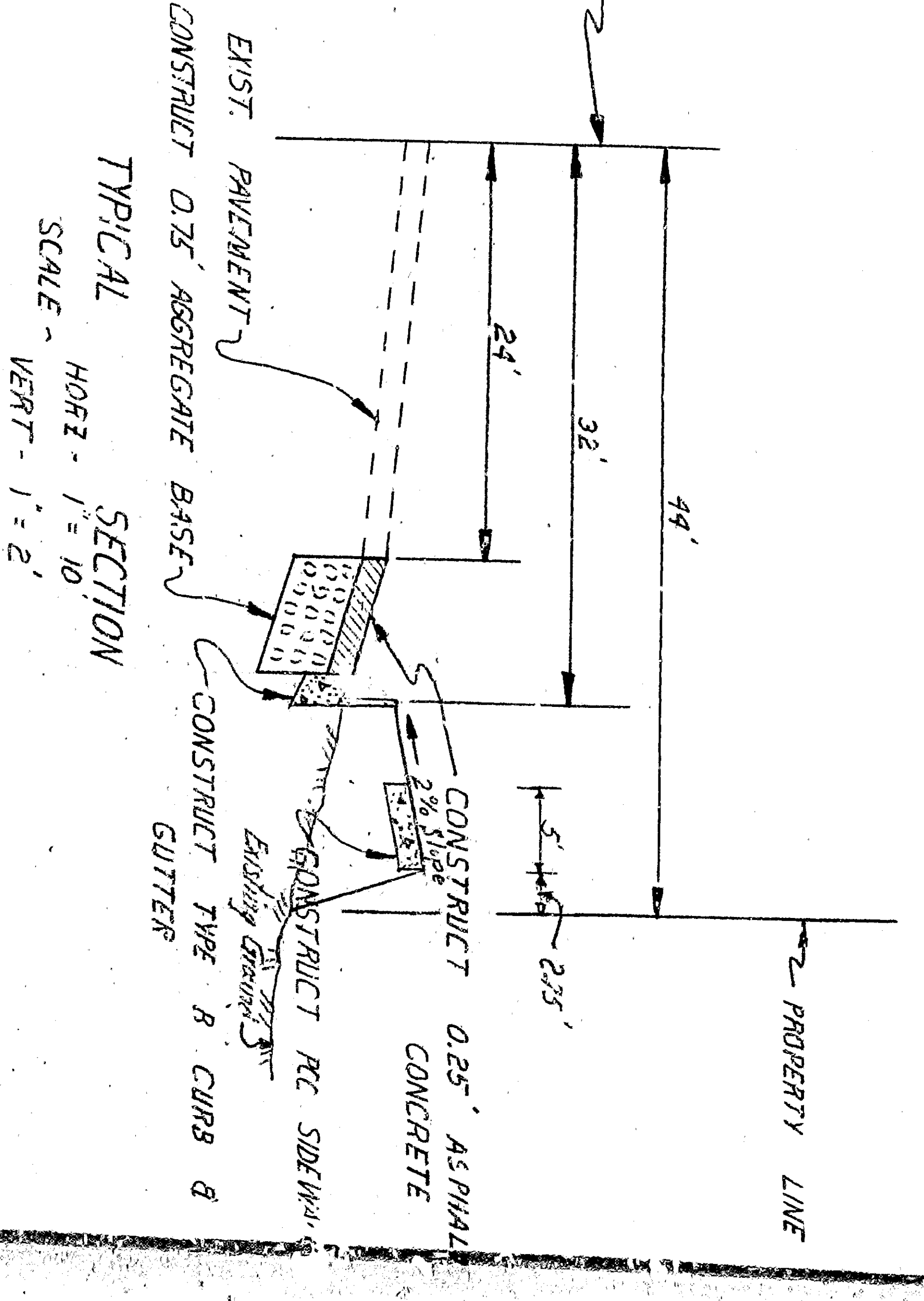
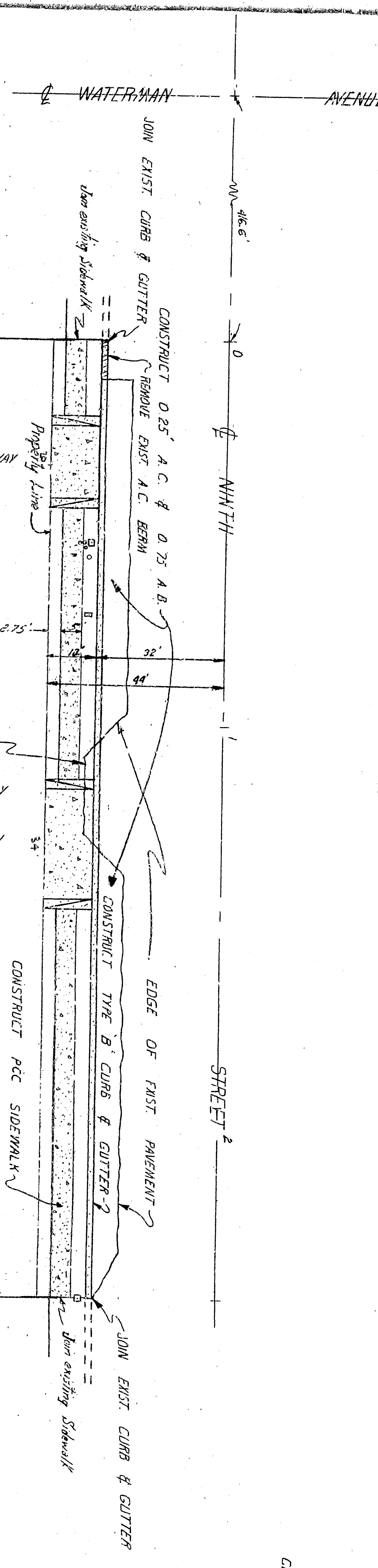
NOTES:

All work indicated on these plans shall be done in conformity with applicable provisions of Standard Specifications No. 2321 and Standard Drawings No. 2321.

BENCHMARK
ELEVATION: 1063.47, N.S.L.
CITY BENCHMARK NO. 4, NORTHWEST CORNER OF NORTH STREET & WATERMAN AVENUE



SCALE ~ 1" = 20'



| | | |
|----------------|--------------------------------------|--------------------------------|
| APPROVED | 1983 | CITY OF SAN BERNARDINO |
| DESIGNED BY | REGISTERED CIVIL ENGINEER NO. 18,623 | DEPARTMENT OF ENGINEERING |
| CHECKED BY | REGISTERED CIVIL ENGINEER NO. 18,623 | IMPROVEMENT |
| DRAWING NO. | 3292 | PLAN |
| SHEETS | 1 OF 1 | NORTH STREET |
| RECOMMENDED BY | | 416 E. EAST OF WATERMAN AVENUE |